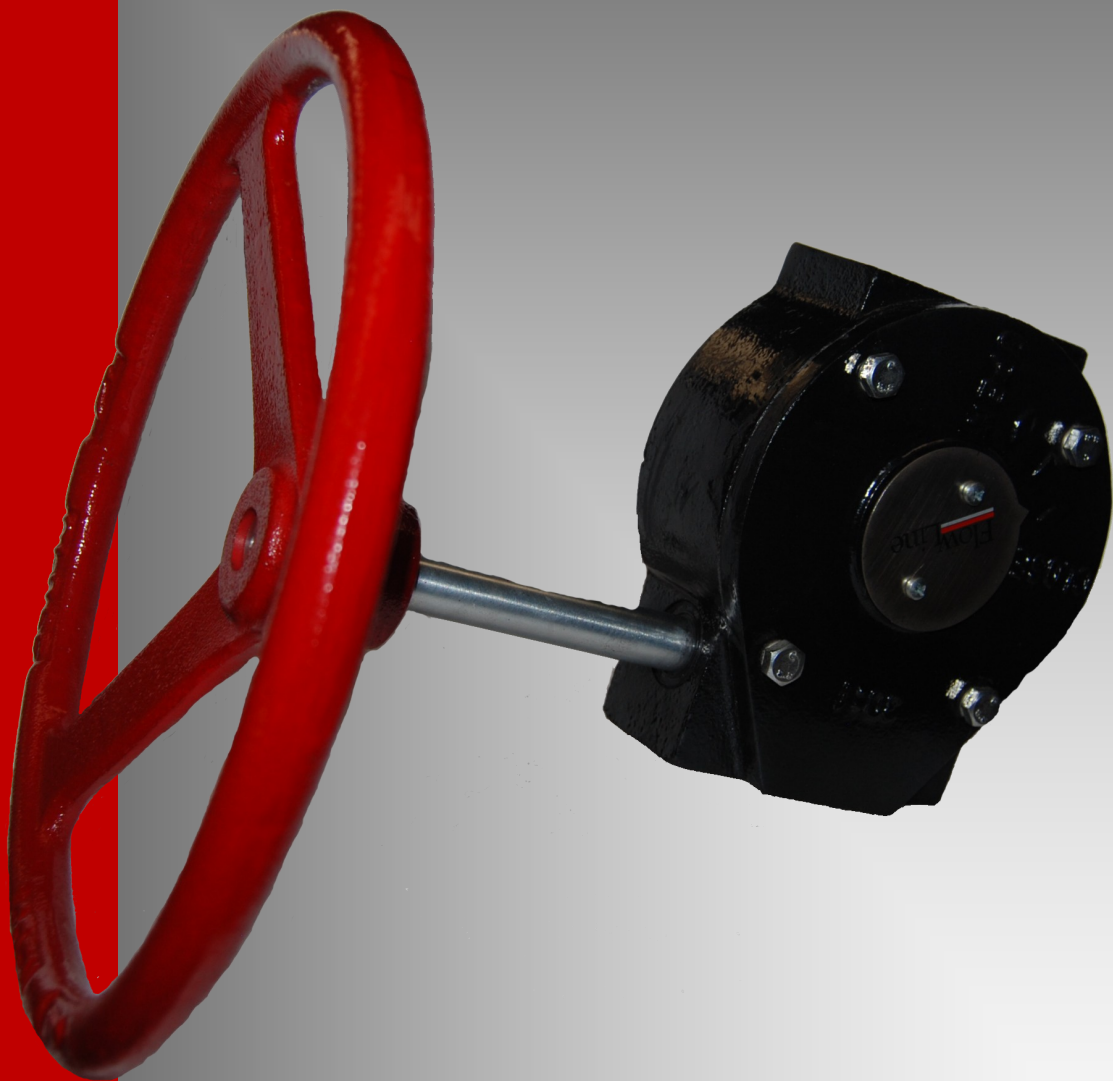


# Flow Line



***Gear Operator***

***Series 15***

Sizes 16" - 24"

# Series 15 Gear Operator

The Series 15 Gear Operators have worm gear drive ensuring pipeline valve fluid flow does not alter valve position. They direct-mount without brackets and couplings on butterfly and ball valves with ISO 5211 mounting pad and shaft dimensions. The series 15 Gear Operators are compact, lightweight, and feature smooth operation.

## Specifications: Part 15-00212 to 15-00214

**Housing and Handwheel:** Ductile Iron

**Hardware:** Carbon Steel

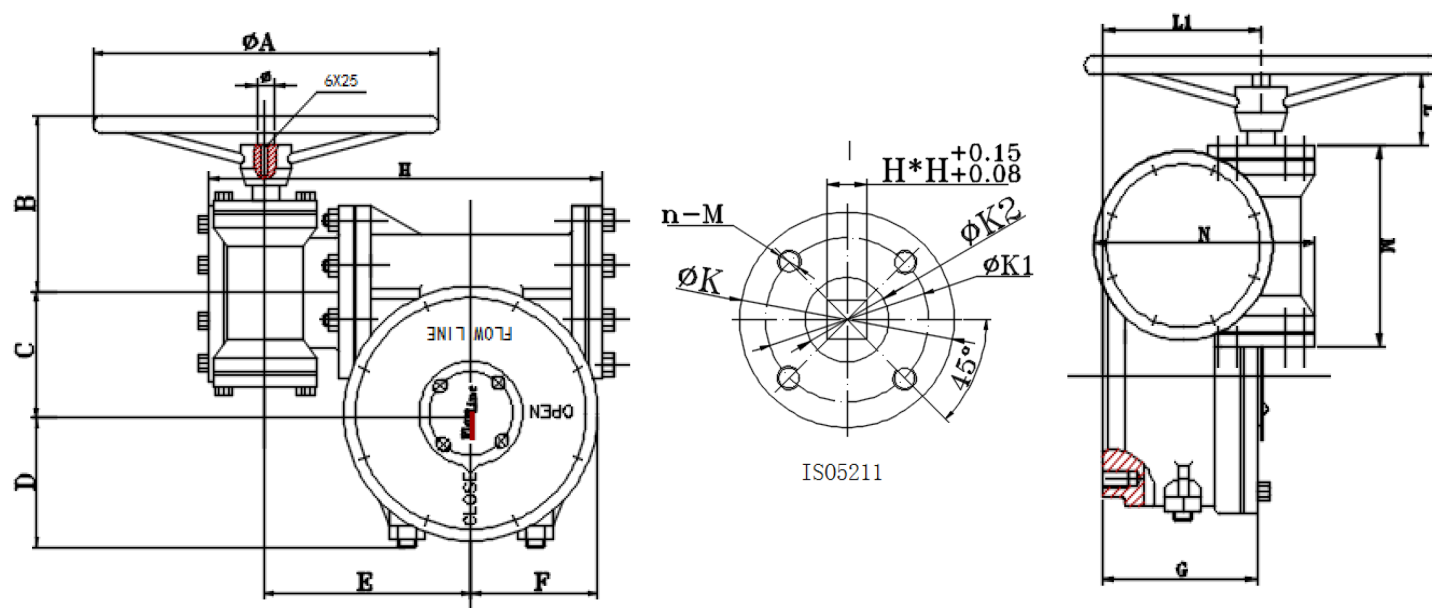
**Worm Gear and Spur Gear:** Forged Steel

**Drive:** Female Square, ISO 5211

**Indicator:** Carbon Steel

**Mounting Patterns:** ISO 5211

## Engineering



Size	Part #	Ratio	A	B	C	D	E	F	G	H*H	K	L	L1	M	N	ISO5211	K	K1	K2	Ø	Mounting	Torque Output
16"-18"	15-00218	532:1	11.41	5.90	3.70	5.12	6.69	4.12	4.17	27*27	12.40	2.48	4.25	5.47	6.41	F16	8.26	5.51	2.75	0.78	4-M16	22127
20"	15-00220	532:1	11.41	5.90	3.70	5.12	6.69	4.12	4.17	36*36	12.40	2.48	4.25	5.47	6.41	F16	8.26	5.51	2.75	0.78	4-M16	22127
24"	15-00224	640:1	14.9	6.69	4.92	5.78	7.79	5.25	4.92	36*36	14.6	2.56	4.68	6.77	7.32	F16	8.26	5.51	3.62	0.78	4-M16	35403

\*Valve sizes are based on Flow Line Valve and Controls butterfly valves

Dimensions: Inches unless otherwise noted

**Flow Line Valve and Controls, Inc.**

PO Box 677, 110 Main Project Rd • Schriever, LA 70395 • Phone (985) 414-6004 • Fax (985) 414-6072

[www.flowlinevalves.com](http://www.flowlinevalves.com)