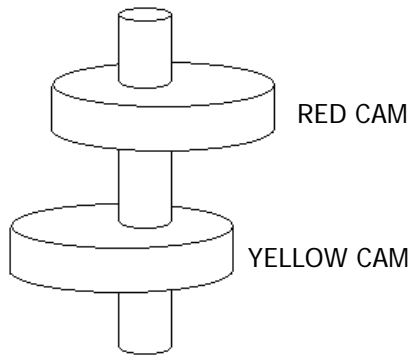
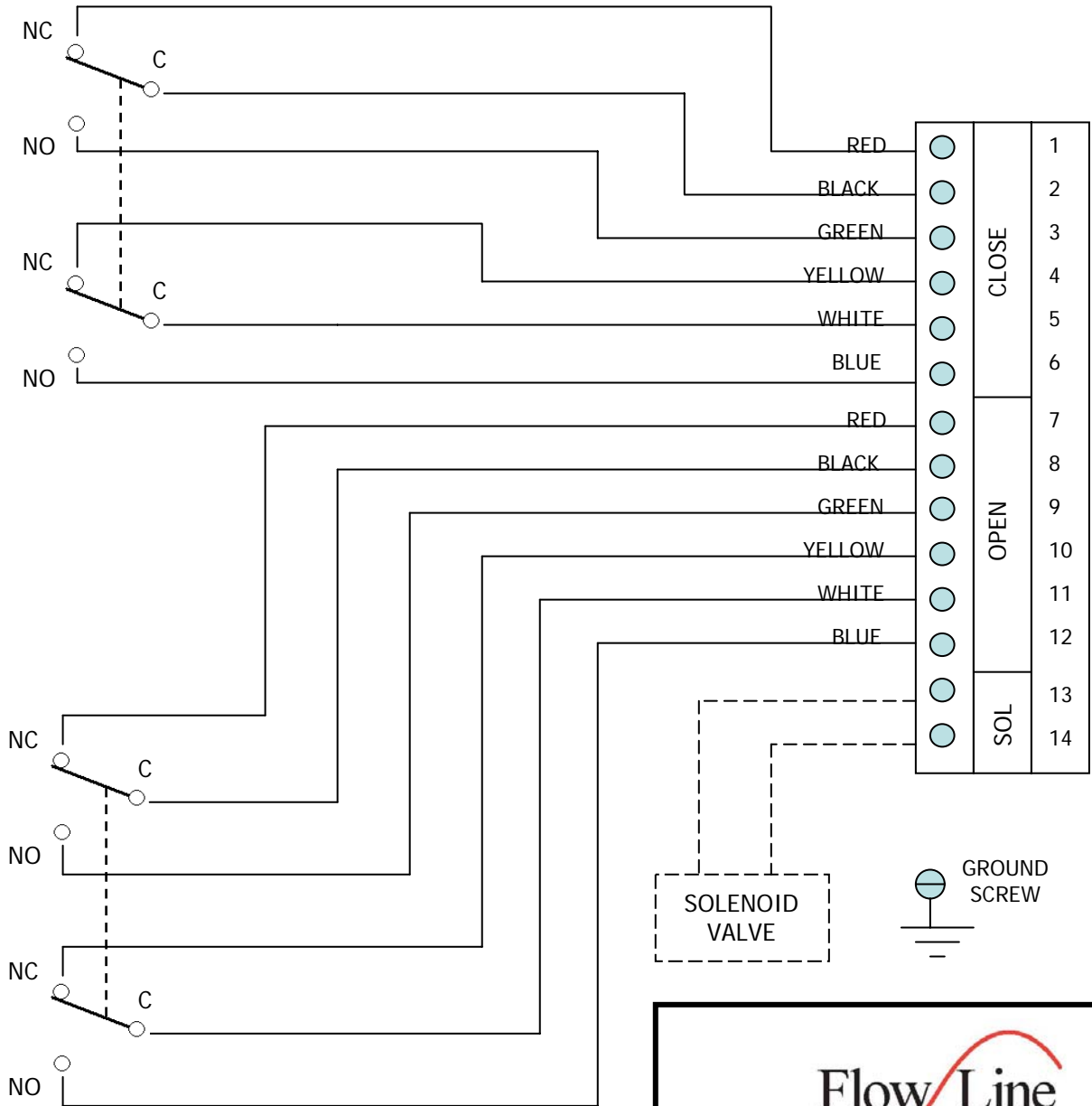


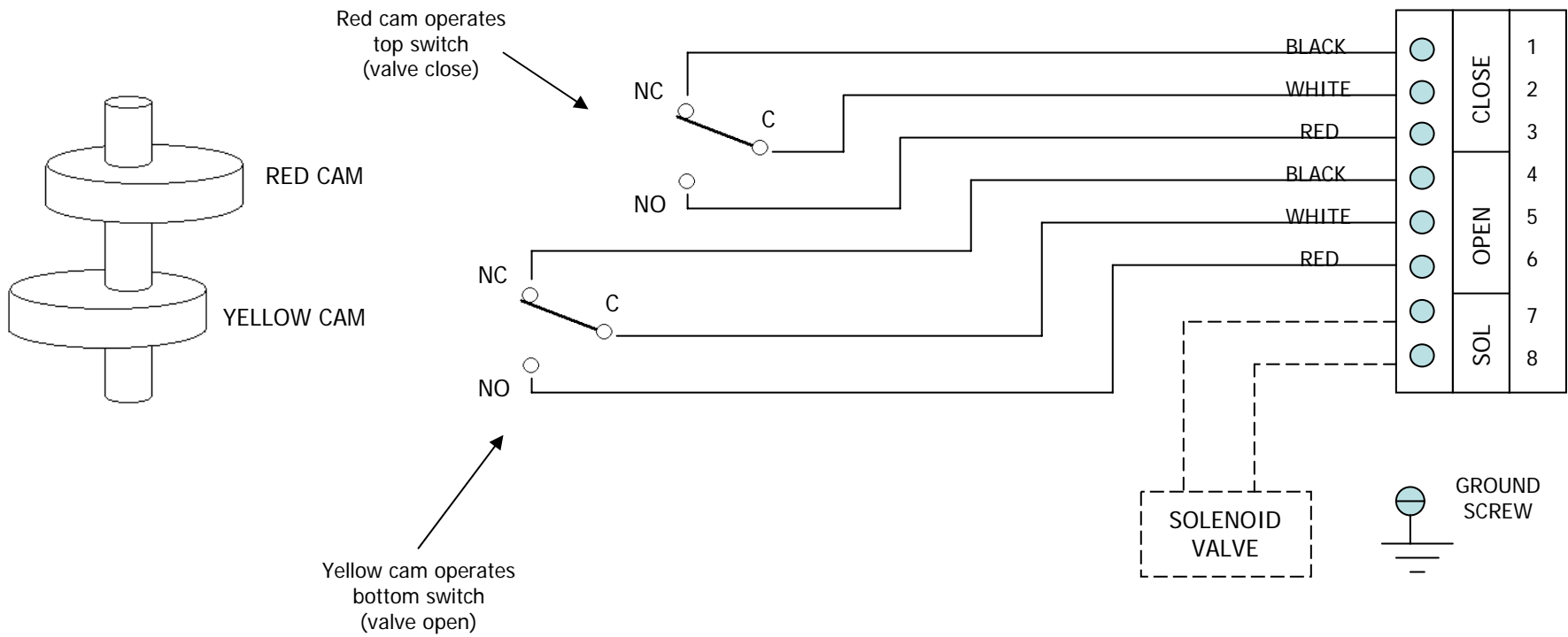
Red cam operates top switch (valve close) →



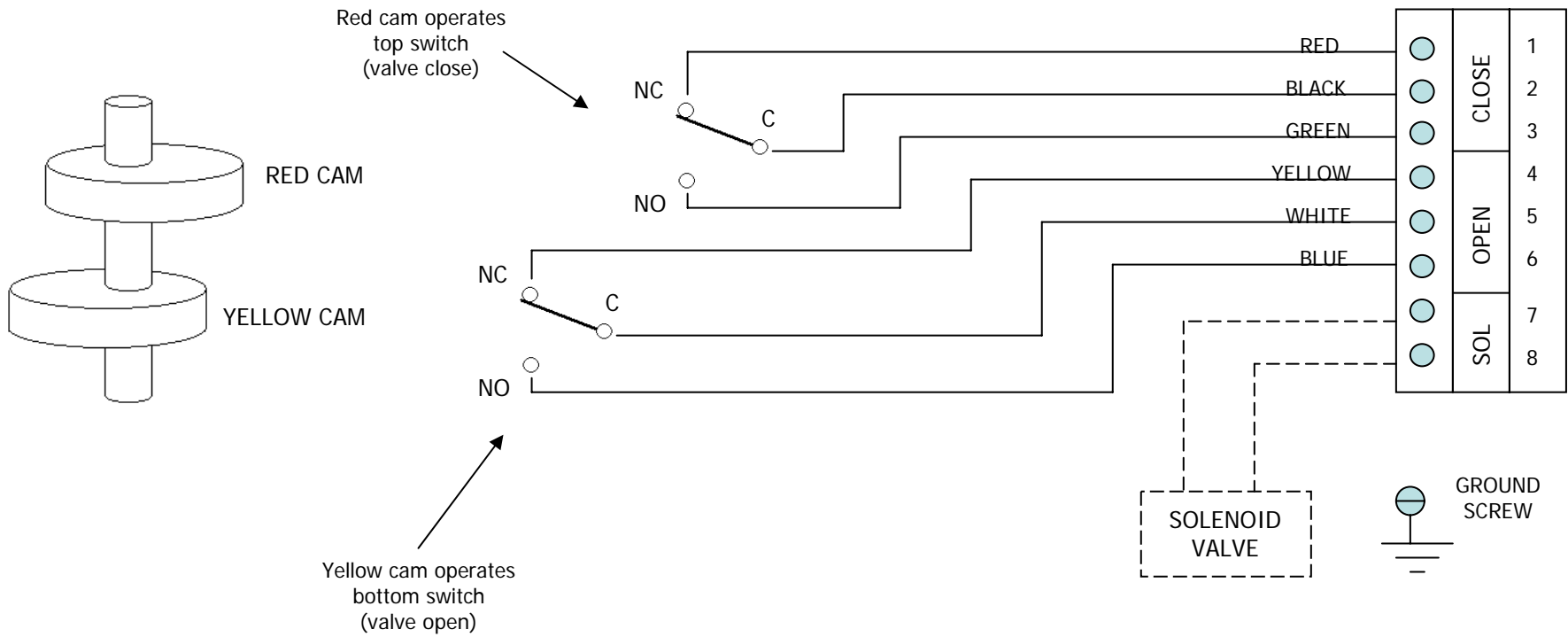
Yellow cam operates bottom switch (valve open) →



**WIRING DIAGRAM**  
**Two DPDT mechanical switches**  
**Limit Switch Series 52**



**WIRING DIAGRAM**  
**Two SPDT reed proximity switches**  
**Limit Switch Series 52**



**WIRING DIAGRAM**  
**Two SPDT mechanical switches**  
**Limit Switch Series 52**