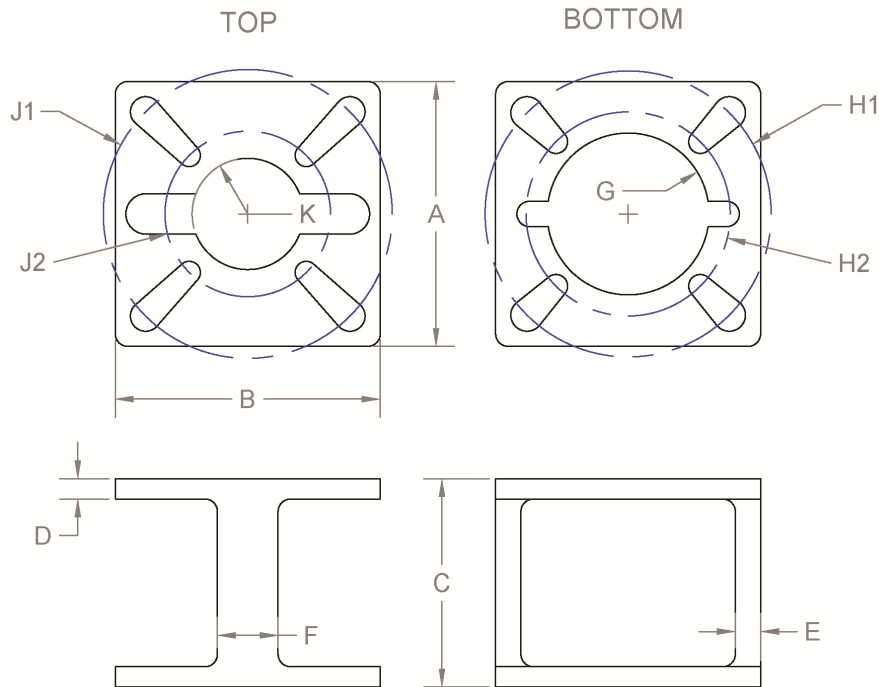
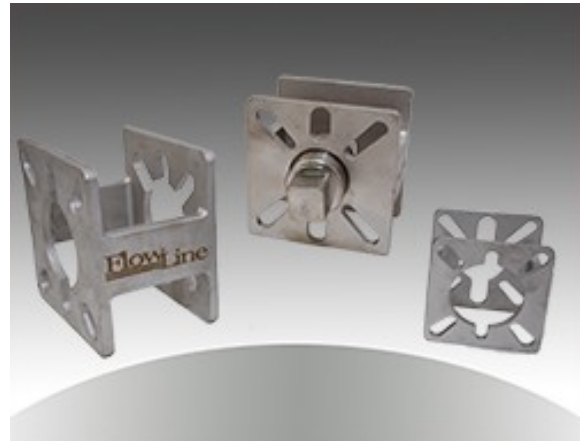


Flow Line

Series 90 Bracket and Coupler

Description

Flow Line Valve and Controls Series 90 brackets and couplers provide a convenient means for mounting a variety of actuators to a wide selection of valves offered. The brackets and couplers come in three different sizes to easily meet customer needs. Series 90 is offered in stainless steel and carbon steel. The bracket and couplers match a variety of ISO 5211 bolt circles.



Part NO.	Material	A	B	C	D	E	F	G	H1	H2	J1	J2	K
90-F07-4	SS316	2.62	2.62	2.06	0.20	0.25	0.60	ø1.60	ø2.83	ø2.02	ø2.86	ø1.64	ø1.10
90-F07-5	WCB	2.62	2.62	2.06	0.20	0.25	0.60	ø1.60	ø2.83	ø2.02	ø2.86	ø1.64	ø1.10
90-F10-4	SS316	3.87	3.87	2.62	0.24	0.32	1.17	ø1.52	ø4.08	ø2.21	-	-	ø.95
90-F10-5	WCB	3.87	3.87	2.62	0.24	0.32	1.17	ø1.52	ø4.08	ø2.21	-	-	ø.95
90-F12-4	SS316	4.74	4.74	3.32	0.28	0.442	1.56	ø2.33	ø4.00	ø2.75	ø4.96	ø3.10	ø2.33
90-F12-5	WCB	4.74	4.74	3.32	0.28	0.442	1.56	ø2.33	ø4.00	ø2.75	ø4.96	ø3.10	ø2.33